

PAGE

11/28/2012

Steering committee & the team

The Steering and Strategic Foresight Committee

The Steering and Strategic Foresight Committee is a place for discussion, exchange and the production of ideas - much like a research seminar. It meets twice a year. Its membership is a reflection of the Forum's unique scientific position at the crossroad between the worlds of research, artistic creation and SNCF. Its composition, predominantly human and social scientists, provides ample scope for a multidisciplinary approach (sociology, geography, economics, urbanism, anthropology, philosophy, political science, etc.) and diverse profiles: researchers, non-specialized artists and scholars, transportation professionals and bloggers. This diversity makes it possible to grasp **mobility** in its various dimensions - social, political, anthropological, economic and so on - as well as allowing for new keys of understanding to emerge. It encourages confrontation between multiple viewpoints and original interaction.



David Azéma

has a law degree and is a graduate of Sciences Po in Paris and the ENA. After several years in senior management, he has held various executive positions at SNCF, London & Continental Railway Ltd., ICCR Limited, Eurostar Group Ltd. and Vinci Concessions. Appointed Senior Vice President of Finance and Strategies at SNCF Group in 2008, he became commissioner of state holdings in August 2012.

Ludovic Bu



is involved in projects that combine organization, management, strategy, sustainable development and mobility. Sales, marketing and development director of SAEMES, he likewise created the socially responsible enterprises Voiture & Co. and Mobility +, which seek to develop a new concept of mobility and reduce the environmental impact of travel. He writes a blog on mobility and is co-author of *Les Transports, la planète et le citoyen*, published in 2010.

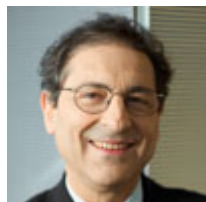


Eric Chareyron

has a background in economics with a focus in transportation and land use. He has alternated between operational positions within the Keolis group and at SNCF. Since 2007 he has been sales and marketing director at Keolis and launched the Keoscopie, a major survey of **lifestyles** and mobility with the aim of renewing Kéolis's approach and deriving new ideas and concrete solutions to serve local communities.

Eric Conti

has been director of innovation and research at SNCF since 2012.



Bernard Emsellem

has a background in mathematics and the humanities. He then turned to strategy and communication consulting. He was head of SOFRES-Communications, went on to create his own firm, was a partner at the FRANCOM group, president of the TWBA agency and communications director at SNCF. He is currently executive vice president of Ecomobility at SNCF and president of the Mobile Lives Forum.

Sylvie Fol



is an urban planning and development professor at the University of Paris I Pantheon-Sorbonne and a member of the Geography-Cities laboratory. Her research focuses on the analysis of socio-spatial inequalities in a perspective of international comparison and more specifically on mobility and territorial anchoring in poor neighborhoods. She published *La Mobilité des Pauvres* in 2010.

Vincent Kaufmann



Vincent Kaufmann is a professor of urban sociology and mobilities analysis at the Ecole Polytechnique Federale de Lausanne (EPFL) and is director of the school's Laboratory of Urban Sociology (LaSUR). After receiving his master's degree in sociology at the University of Geneva, Kaufmann completed his PhD on the logics of actions underlying transportation modal choice at the EPFL. He was a guest researcher at the University of Lancaster (2000), the Ecole des Ponts (2001-2002) and the Catholic University of Louvain (2006-2011). His current work focuses on mobility and its link with the transformation of contemporary societies and their territories.

Christian Licoppe



Christian Licoppe, a historian and sociologist of science and technology, is a professor of sociology of information and communication technology at Télécom ParisTech. For the

past several years, he has been conducting research on the relationship between mobility, communication and sociability in urban areas, especially in connection with mobile tracking applications. He has also developed an ethnographic, workplace studies-type approach, based in particular on the analysis of video data. It is in this framework that he is studying the development of forms of remote participation in the relationship between organizations and their various audiences.

Jean-Pierre Martin



writer, scholar and holder of a degree in literature, is currently professor of contemporary literature at the University of Lyon 2 and a member of the Institut Universitaire de France. He is the author of numerous essays and works of fiction. In 2011 he published *Les Liaisons Ferroviaires*.

Olivier Mongin



has followed a course combining philosophy, literature, anthropology and history. He is director of the Humanities review *Esprit*, and co-founded the discussion group *Les Métropolitaines*. He is likewise vice president of the think tank *La République des Idées*. A philosopher, he is author of numerous essays, including *La ville des flux*, published in 2013.

Catherine Morency



a civil engineer, is a professor of transportation planning at the Ecole Polytechnique of Montreal and chair of research on the assessment and implementation of sustainability in transportation. She is particularly interested in modeling the interactions between urban mobility and spatial dynamics and in alternative modes of transportation.

Jean-Marc Offner



an urban planning engineer and political scientist, has been director of a-urba, the urban planning agency of Bordeaux metropolitan Aquitaine. He is also a member of the editorial boards of Flux, Métropolis and Urbanisme and an administrator at the CAUE of Gironde, of the Ecole d'Architecture et du Paysage of Bordeaux and of the Institut Français d'Urbanisme. He recently published Politiques de transport : prospective et outils (2009).

Valérie Pihet



has been executive director of the Ecole des Arts politiques at Sciences Po since 2010. She has worked with Bruno Latour on the conception and installation of two major international exhibitions on the crisis of representation in the sciences, in politics, in the arts and in religion (Iconoclash in 2002 and Making Things Public: Atmosphere of Democracy in 2005) that brought together researchers and artists. She also works with numerous artists and social scientists on an independent basis.

Lionel Rougé



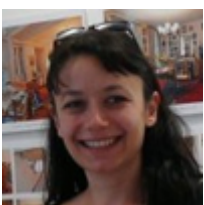
is a CNRS researcher and lecturer in geography and planning and development at the University of Caen in Lower Normandy. His work mainly focuses on residential strategies, mobility and the lifestyles of households in peri-urban areas. He has directed several research programs, including "TIC et stratégies de localisation des ménages en périurbain" (2007-2008) and "Vieillir en pavillon: mobilité et immobilité des personnes âgées dans les espaces périurbains " (2006-2008).

Mimi Sheller



a sociology professor, is the founding director of the Center for Mobilities Research and Policy at Drexel University in the United States. She is also co-founder of the journal *Mobilities* and author of numerous articles and books, including the articles ["New mobilities paradigm"](#) (2006) and ["Immobilities and Moorings"](#) (2006), co-authored with John Urry, and the books *Tourism Mobilities: Places to Play, Places in Play* (2004) and *Mobile Technologies of the Cities* (2006). She is currently involved in writing the *Handbook of Mobilities* (Routledge).

Hortense Soichet



is the author of a thesis in aesthetics on "photography [movement](#) in the era of generalized mobility." Her research focuses on contemporary photography. As a photographer, she is interested in how people occupy micro-spaces. She recently published two books on the representation of domestic spaces entitled *Intérieurs, logements à la Goutte d'* ["Intérieurs, logements à la Goutte d'"](#)

(Créaphis, 2011) and Aux Fenassiers (Créaphis and Ville de Colomiers, 2012) and a website presenting a work deployed in three cantons of Haut-Garonne: www.leshabitants.com

Bernard Stiegler



a philosopher, is director of the Pompidou Center ~~XX~~ Institute for Research and Innovation. He is also an associate professor at the University of London (Goldsmiths College, and the University of Technology of Compiègne and president of the association Ars Industrialis, an international association for industrial policy for technologies of the spirit. The question of technology is at the heart of most of his work. In the 1980s he explored the challenges of digitization in the exhibition Mémoires du Futur at the Pompidou Center.

To accomplish its mission, the Mobile Lives Forum has decision-making bodies that have established a framework to foster forward thinking, scientific production, exchange and the discussion of topics related to developments in mobilities. It has also been designed to facilitate and strengthen ties with the academic and scientific communities of the many disciplines concerned, cooperate with scientific and professional groups with similar objectives, and develop materials so that the results obtained can be shared with a diverse audience.

Management

The Mobile Lives Forum is headed by Bernard Emsellem, Advisor to the President of SNCF.

Bernard Emsellem has a background in mathematics and the humanities. He later turned to strategy and communication consulting. Formerly head of SOFRES-Communications, he went on to create his own firm, was a partner at the FRANCOM group, president of the TWBA agency and communications director at SNCF. He is currently Advisor to the President of SNCF and president of the Mobile Lives Forum.

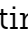

Directors Christophe Gay and Sylvie Landriève are responsible for steering, organizing and coordinating the Institute's activities.

Christophe Gay has combined training in international law (Sceaux), political science (Sorbonne) and psychosociology (Nanterre). After working on the image of big companies and local governments, he was the regional transportation communication director and then headed strategic planning for SNCF communications. An expert in mobility issues, he is behind the creation of the Forum.

[Contact.](#)

Sylvie Landriève has a background in the humanities (Sorbonne), urban and regional development (Sciences-Po Paris) and public policy management (Mines, Nanterre and ESCP). After working as real estate and urban projects manager for BNP Real Estate, she headed real estate management for SNCF and directed its assets management department. In 2016, she published a book : [L'Immobilier. Une passion française](#) (Demopolis). [Contact.](#)

Scientific and Artistic Direction

Vincent Kaufmann is the Mobile Lives Forum  scientific director. In charge of validating the scientific interest of Forum guidelines, actions and productions, he chairs the Steering and Strategic Foresight Committee and oversees the implementing of the Forum  projects at the scientific level.

Vincent Kaufmann, a Swiss sociologist, is one of the pioneers of mobility and inventor of the concept of [motility](#). He is director of LaSUR at the EPFL, General Secretary of CEAT and professor of sociology and mobility analyses.

Javier Caletrio is the scientific advisor of the Mobile Lives Forum for the English-speaking world.

Javier Caletrío (BA Economics, Valencia; MA, PhD Sociology, Lancaster) is based at the Centre for Mobilities Research at Lancaster University. His research focuses on the relationship between mobility, technological development and social dynamics from a cross-cultural perspective.

Guillaume Logé is the artistic advisor of the Mobile Lives Forum.

Guillaume Logé is a researcher in Art History and Environmental Sciences (Ecole Normale Supérieure de Paris and Lausanne University). He owns Master degrees in Finance (SciencesPo), Law (Paris II), Litterature (Paris III), former auditor at the Ecole du Louvre. He first developed partnerships at the Quai Brany Museum, then at the Orsay and Orangerie museums where he ended up becoming Advisor to the President.

The Team

Tom Dubois has a Master ~~XX~~ in urban planning and development from the Paris Institute Urban Planning and the ~~XXXXXXXX~~ des Ponts Paris Tech. He manages research development projects, organizing events and public relations. [Contact.](#)

Pierre Gaudino, a graduate of the master ~~XX~~ program in urban planning and development at the University of Paris 1 Panthéon-Sorbonne, is responsible for managing some research projects in the social sciences and humanities and monitoring some sections of website content. [Contact.](#)

Éléonore Hermand holds three master ~~XX~~ degrees (in history, litterature and publishing) from the universities of Paris-1 Panthéon-Sorbonne, Paris-3 Sorbonne-Nouvelle and Paris-4 Sorbonne. She is responsible for the website, managing Artistic Lab and is in charge of the Forum community. [Contact.](#)

Anaïs Lefranc-Morin, a graduate of the master ~~XX~~ program in urban planning and development at the University of Paris 1 Panthéon-Sorbonne, is responsible for managing some research projects in the social sciences and humanities and organizing events. [Contact.](#)

Catherine Paris , assistant. [Contact](#).

Marc Pearce graduated from the master program in urban planning and development at the Urbanism Institute of Paris (IUP) and the National School of Architecture, Paris-Malaquais (ENSAPM). He is responsible for managing research projects in social sciences and organizing seminars and events. [Contact](#).

Board of Directors

The Board of Directors defines the Forum general policy and aims. It is comprised of five members of the SNCF group.

Mobility

Broadly, the word mobility can be defined as the intention to move and the realization of this movement in geographical space, implying a social change.

[More](#)

Lifestyle

A lifestyle is a composition of daily activities and experiences that give sense and meaning to the life of a person or a group in time and space.

[More](#)

Mobilities paradigm

The mobilities paradigm is a way of seeing the world that is sensitive to the role of movement in ordering social relations. It serves to legitimize questions about the practical, discursive, technological, and organizational ways in which societies deal with distance and the appropriate methods for their study.

[More](#)

Movement

Movement is the crossing of space by people, objects, capital, ideas and other information. It is either oriented, and therefore occurs between an origin and one or more destinations, or it is more akin to the idea of simply wandering, with no real origin or destination.

[More](#)

Motility

Every person, every group can be characterised by greater or lesser propensities for moving around a geographic, economic and social space. [Motility](#) has been the name given to these aptitudes, a reference to the use of this term in biology.

[More](#)

- 1 <http://en.forumviesmobiles.org/page/steering-committee-team>
- 2 <http://www.leshabitants.com/>
- 3 <mailto:christophe.gay@sncf.fr>
- 4 <https://www.amazon.fr/Limmobilier-une-passion-fran%C3%A7aise-exceptionnelle/dp/2354570953>
- 5 <mailto:sylvie.landrieve@sncf.fr>
- 6 <mailto:tom.dubois@sncf.fr>
- 7 <mailto:pierre.gaudino@sncf.fr>
- 8 <mailto:leonore.hermand@sncf.fr>
- 9 <mailto:anais.lefranc-morin@sncf.fr>
- 10 <mailto:catherine.paris@sncf.fr>
- 11 <mailto:marc.pearce@sncf.fr>
- 12 <http://en.forumviesmobiles.org/marks/mobility-450>
- 13 <http://en.forumviesmobiles.org/marks/lifestyle-1756>
- 14 <http://en.forumviesmobiles.org/marks/mobilities-paradigm-3293>
- 15 <http://en.forumviesmobiles.org/marks/movement-460>
- 16 <http://en.forumviesmobiles.org/marks/motility-461>